



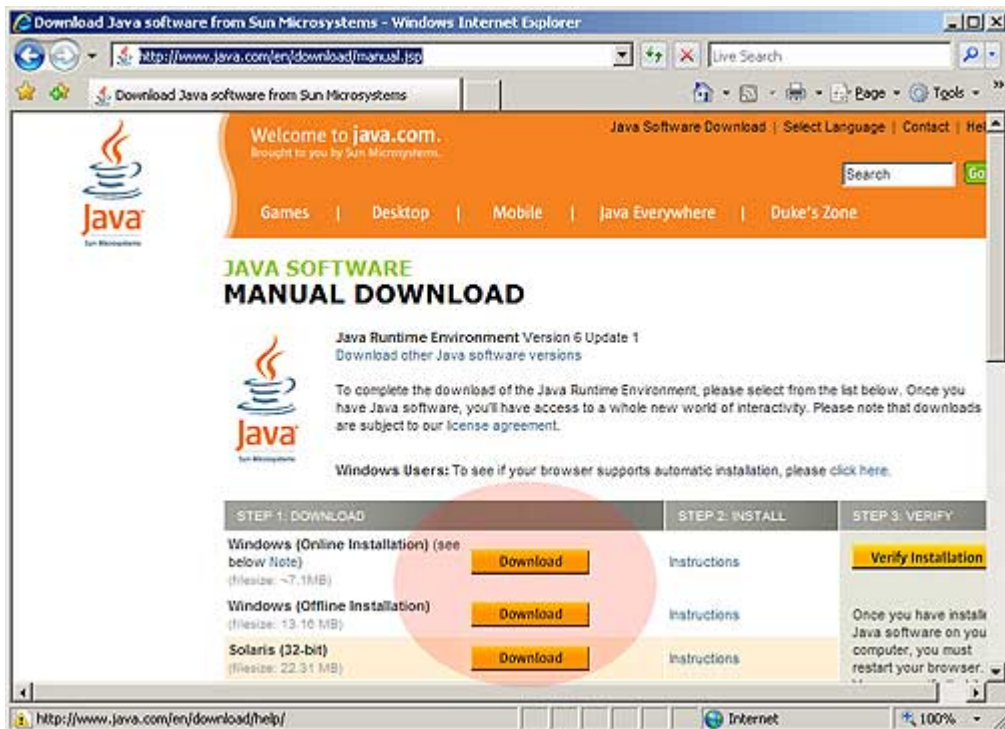
POSTX Browser Configuration

Introduction:

As many of the issues accessing the Visa POSTX environment are related to configuration we have created this guide to ensure your Browser and Java environments are correct.

Java Installation:

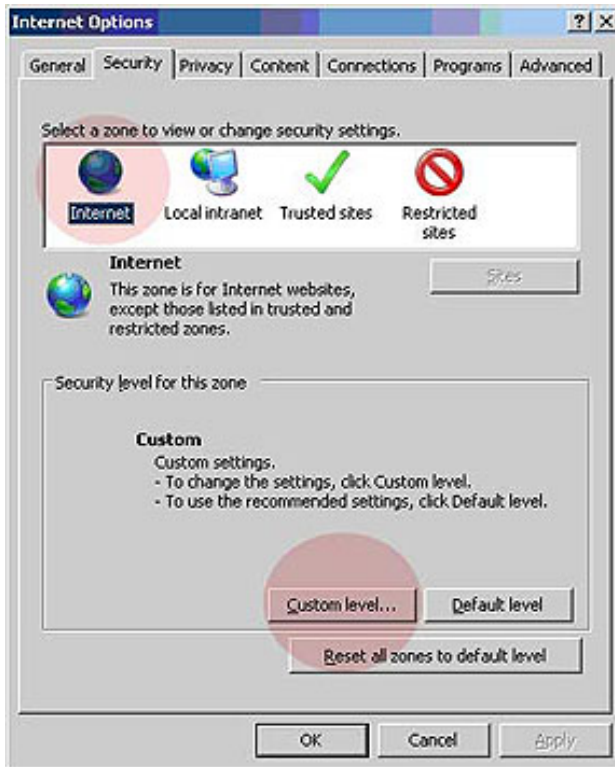
Ensure you have the latest Java installed. You can download it from <http://www.java.com/en/download/manual.jsp>



Depending on your preference you can select either Online or Offline Installation. Both will install the current version. Once completed restart your browser to activate the latest version of Java.

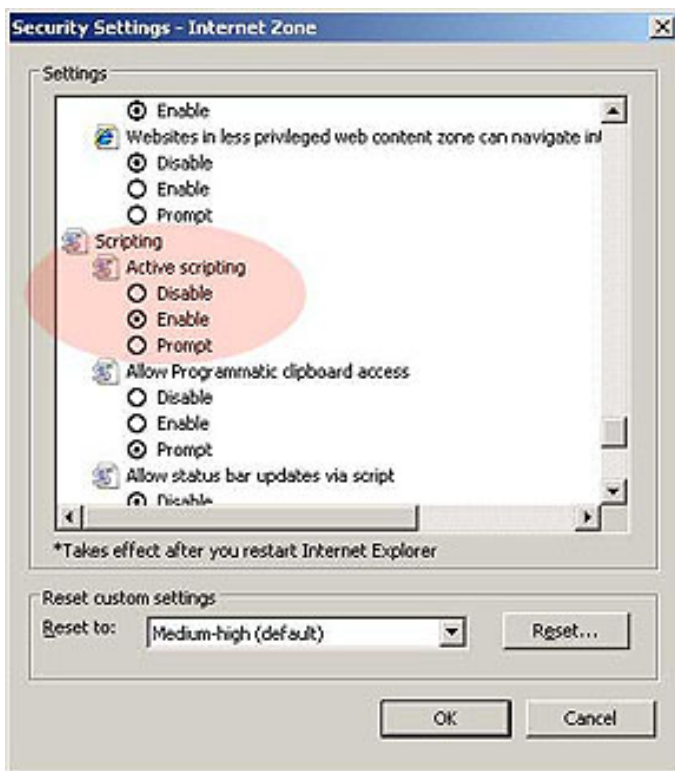
Internet Explorer Browser Settings:

The security settings need to be adjusted to ensure that **JavaScript** is enabled. This can be found under Internet Options the click the Security Tab. Under Internet Explorer **TOOLS: INTERNET OPTIONS: SECURITY** Highlight **Internet** then click the **Custom Level** button as described below:



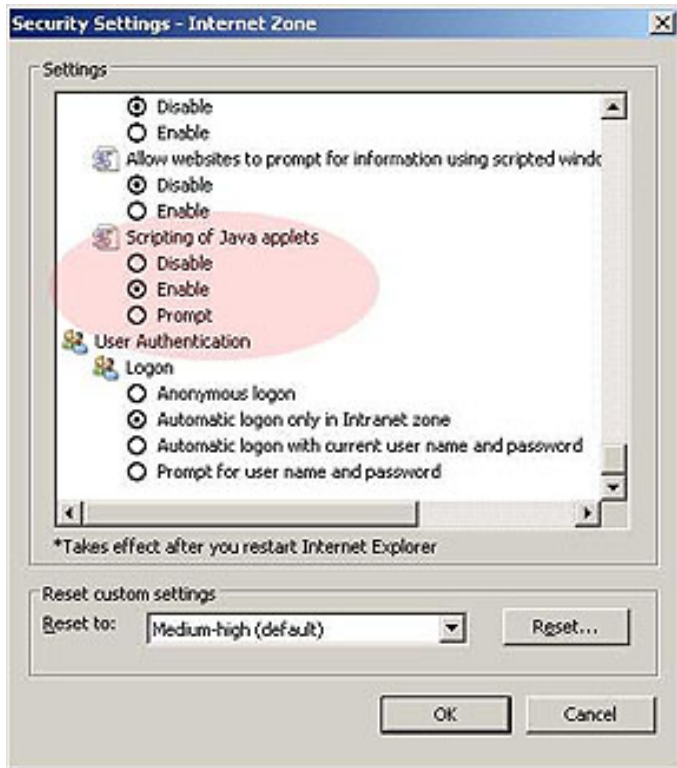
Browser Settings Continued:

Check **Enable** under **Scripting** "Active Scripting"



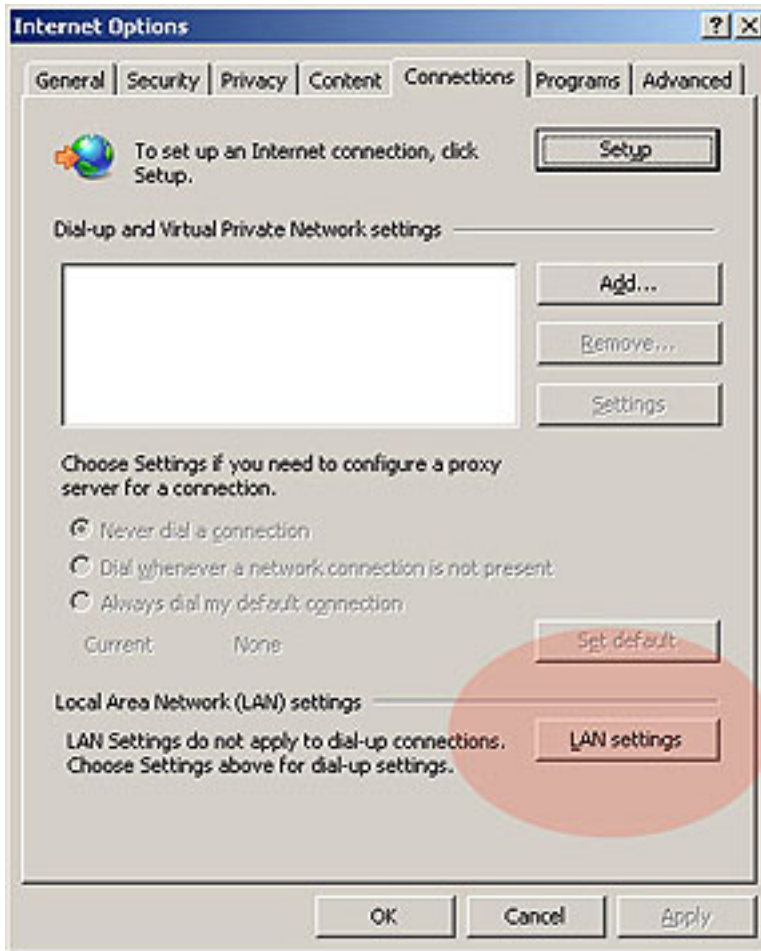
Browser Settings Continued

Check **Enable** under **Scripting** "Scripting of Java Applets" then click OK the OK to exit the Security Settings.

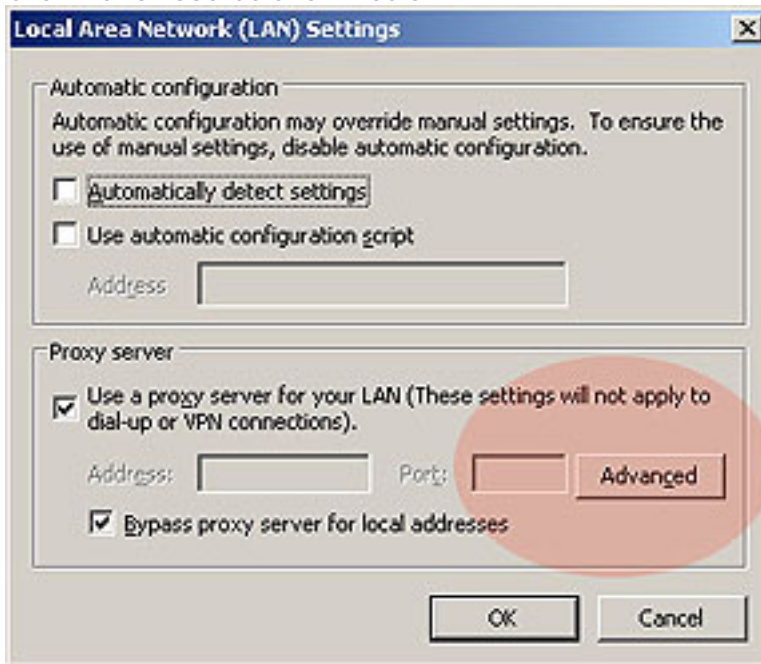


If your company uses a Proxy server for Internet Connections:

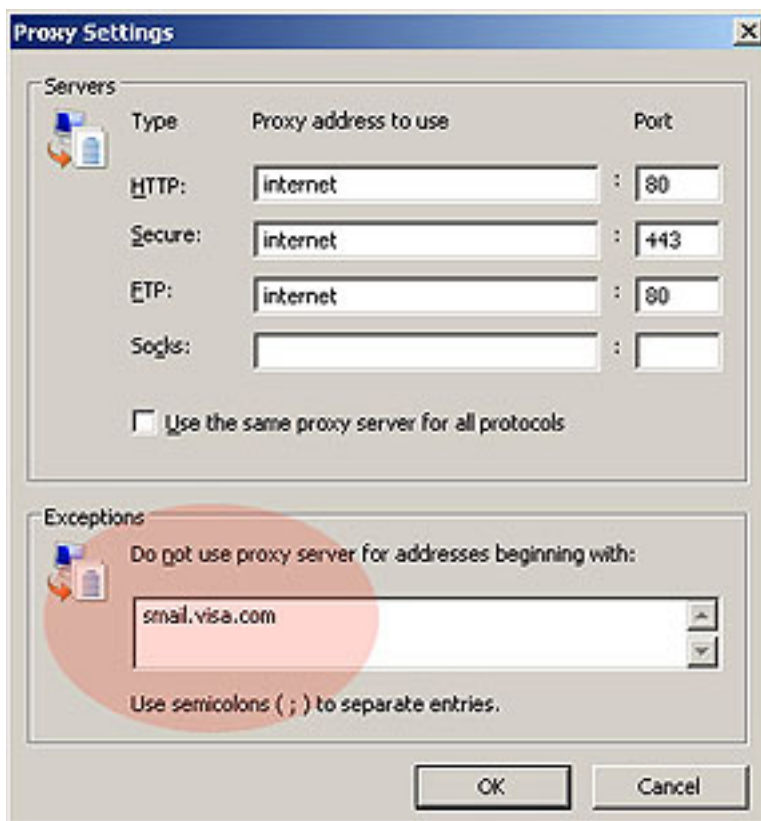
Open Internet Options: Select **Connections** then click the **Lan Settings** button



Click **Advanced** as shown below:



In the Exceptions box ensure that **smail.visa.com** included in the "Do not use proxy server for addresses beginning with:"

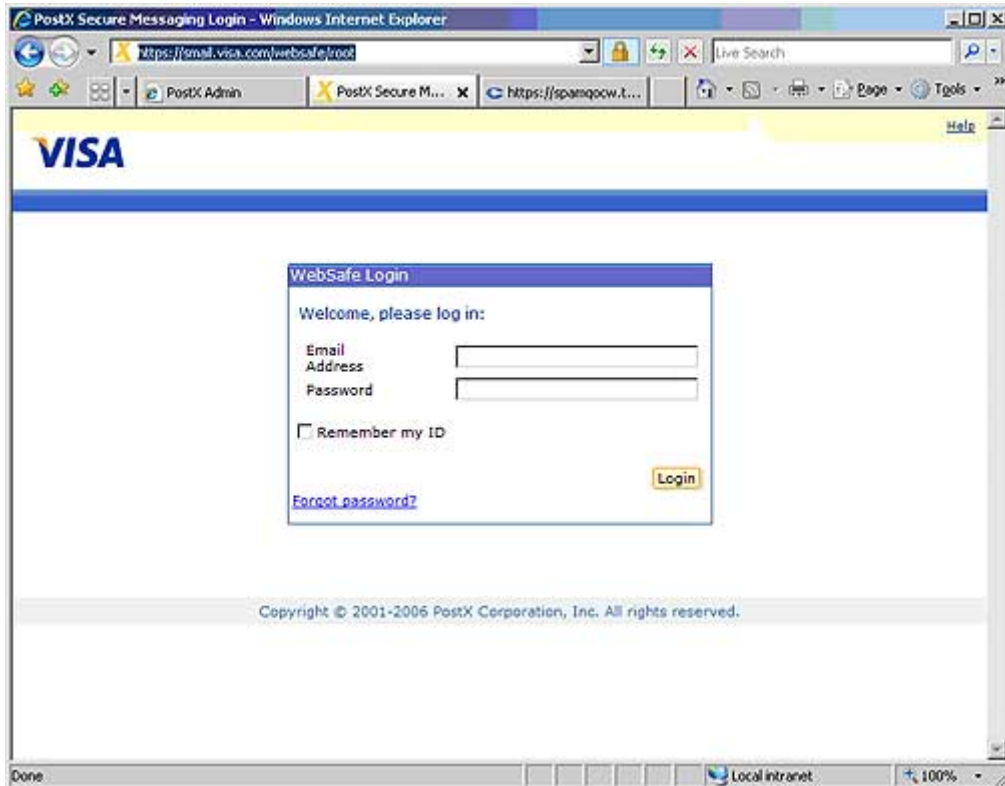


POSTX Browser Configuration

Finally test your connection to smail.visa.com. From a web browser enter the following

<https://smail.visa.com/websafe/root>

Your web browser should display



Should you require additional assistance after following these steps please contact the original sender for problem routing.